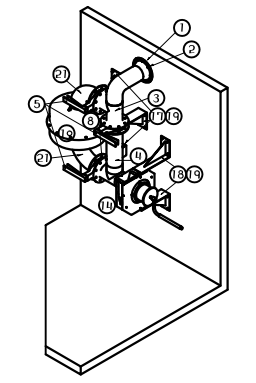
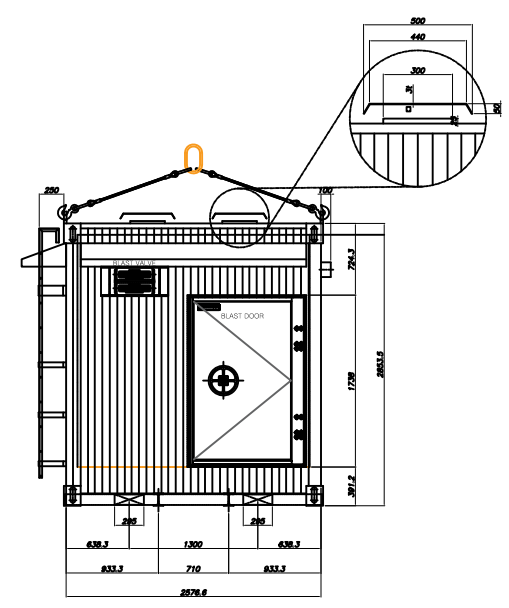
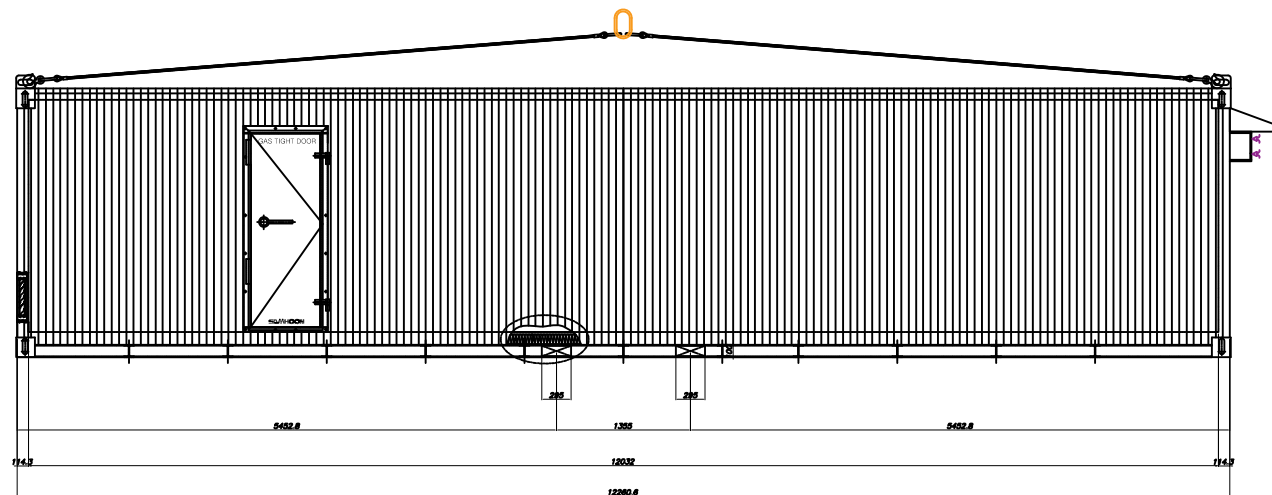
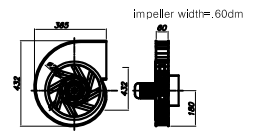
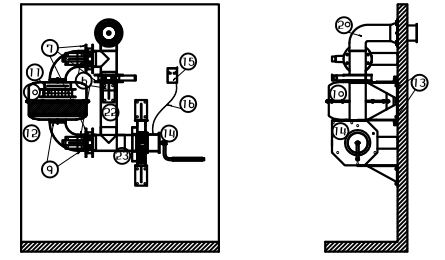


LEGEND

CCR	OVER PRESSURE(Pa)	TYPE	DESCRIPTION
ESA	80 UPPER		BLAST PROOF DOOR
CS GAS ROOM	160 UPPER		GAS TIGHT DOOR
TFA	250 UPPER		TFA

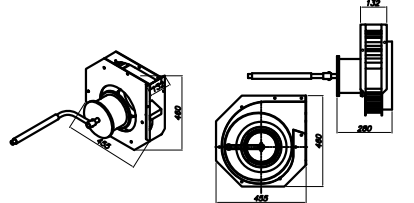
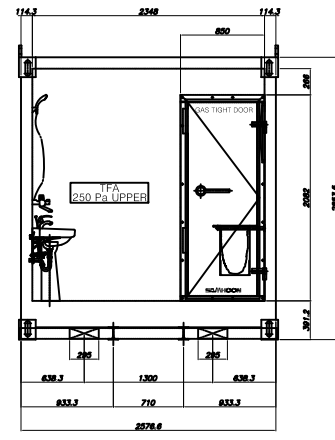
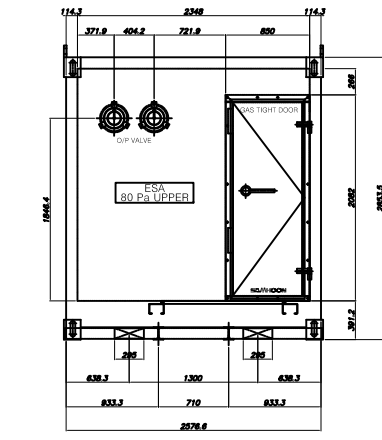
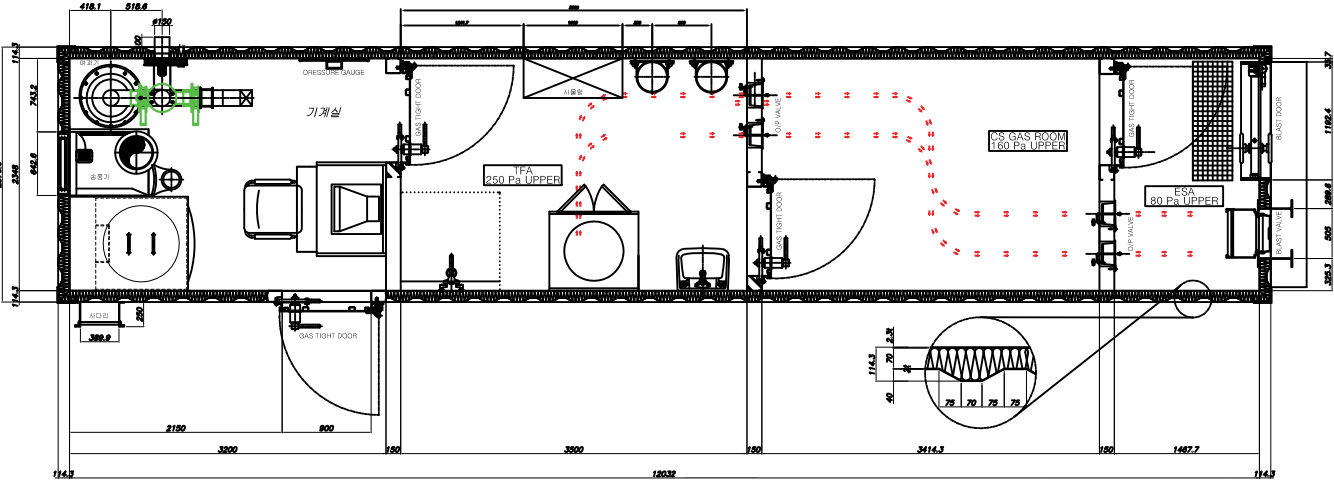


- MATERIAL LIST :
- 1- BLAST VALVE (OPTIONAL)
 - 2- AIR INLET VALVE (OPTIONAL)
 - 3- HOSE (OPTIONAL)
 - 4- FILTER SH-VF150-11NBC (CLASS 3)
 - 5- AIR OUTLET VALVE (OPTIONAL)
 - 6- ELECTRO FAN DIRECT DRIVE 12 VOLTS D.C / 24 VOLTS D.C / 220 VOLTS A.C
 - 7- INDICATOR & ALARM VALVE (OPTIONAL)
 - 8- ELECTRICAL PANEL
 - 9- EMERGENCY HAND DRIVE ELECTRO FAN 12 VOLTS D.C / 24 VOLTS D.C / 220 VOLTS A.C (OPTIONAL)
 - 10- AIR BYPASS VALVE (OPTIONAL)



FAN SPECIFICATION :

FAN TYPE : Direct Drive Backward Fan
 AIR FLOW : MAX 320 M³/h @ 615 pa
 Working point: 150 m³/h @ 500 pa
 POWER : 100 W ~ 12/24 Volts DC
 AIR INLET SIZE : 6 INCH
 Speed : 3000 rpm
 FAN BODY : 430*365 MAX
 FAN BLADE : DIA 260 *24

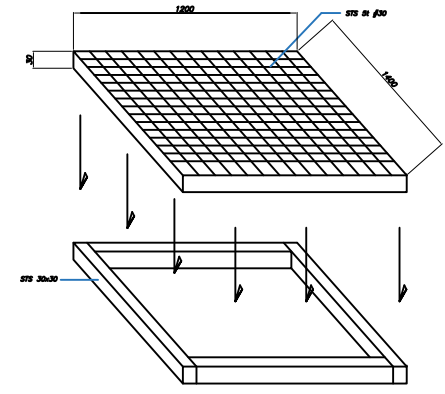
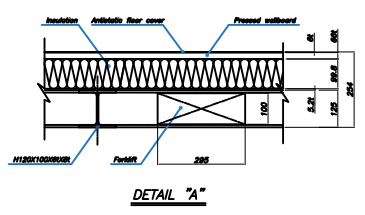
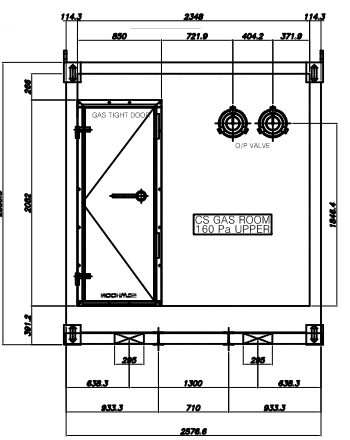


FAN SPECIFICATION :

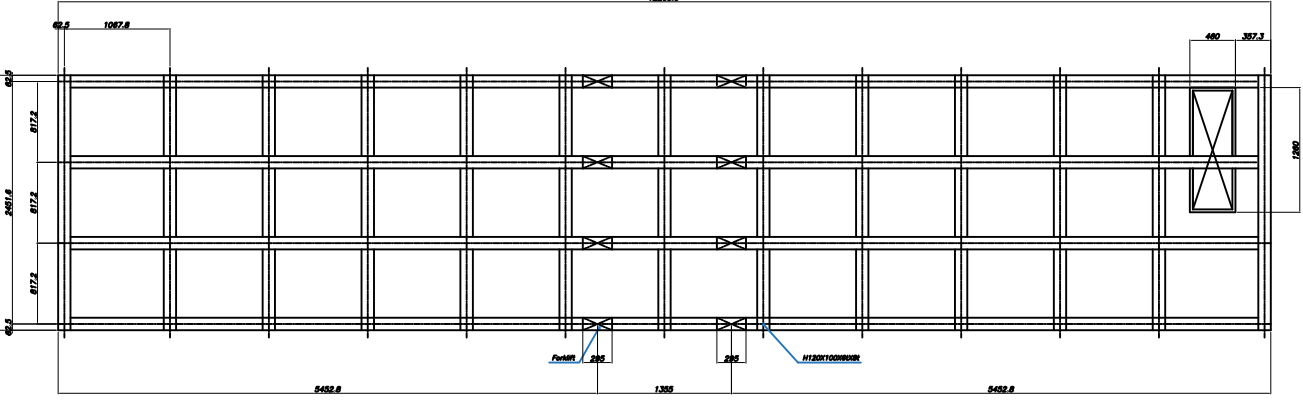
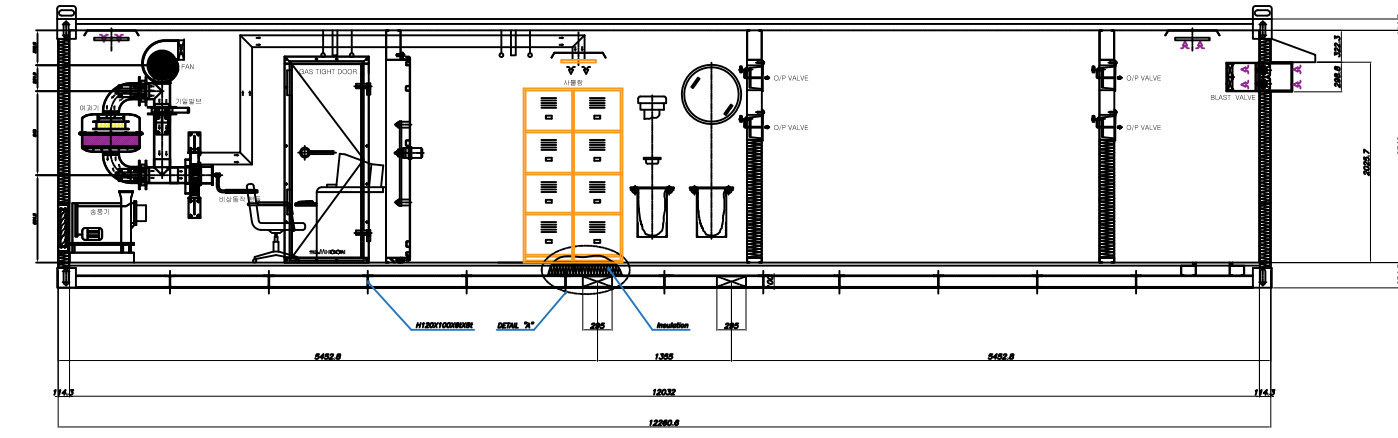
FAN TYPE : Direct Drive Backward Fan With Handle Drive
 AIR FLOW : MAX 500 M³/h @ 720 pa
 Working point: 150 m³/h @ 650 pa
 POWER : 250 W ~ 12/24 Volts DC
 AIR INLET SIZE : 6 INCH
 Speed : 3000 rpm
 FAN BODY : 455*460 MAX
 FAN BLADE : DIA 280 *24

NOTE

1. SHELTER의 방폭압력은 8 PSI이상 이어야한다.
(BLAST LOAD FOR SHELTER SHALL BE MINIMUM 8PSI.)
2. 외부에 설치되는 사다리, 캐노피는 분리 가능한 구조이다.
(LADDER & CANOPY THAT ARE INSTALLED AT OUTSIDE SHALL BE A SEPARABLE TYPE.)
3. NBC FILTER는 미국정부 산하 에너지국으로부터 테스트가 된 제품을 적용한다.
(NBC FILTER SHALL BE APPLIED THAT WAS TESTED BY THE U.S. ENERGY DEPARTMENT)
4. TFA(정장지역)의 시설물 및 샤워부스가 필요한 경우는 별도의 공사비로 한다.
(ADDITIONAL COST SHALL BE REQUIRED IF ANY FACILITIES OR SHOWER BOOTH ARE NECESSARY AT TFA (CLEAN ZONE).)
5. 전기공급은 별도의 발전기 없이 외부 공급형으로 한다.
(SUPPLY OF ELECTRICITY SHALL BE BY AN EXTERNAL SUPPLY TYPE. NOT SEPARATE GENERATOR.)
6. ESA지역의 오염된 공기는 강제순환 방식으로 여과기에 공급되어야 한다.
(CONTAMINATED AIR AT ESA AREA SHALL BE SUPPLIED TO THE FILTER BY FORCED CIRCULATION TYPE.)



ALL FLOOR CLOSING



REV.	DATE	DESCRIPTION	PREPARED	REVIEWED	APPROVED	APPROVED
0	23.01.10	ISSUED FOR APPROVAL	김미영	정성권	문종성	

PROJECT: MOBILE CBRNe SHELTER(40FT)

SAMHOON CO., LTD.
 6584, Spangin-ro, Seongbuk-gu, Seoul, Korea
 TEL: 82-2-32-861-3001 / FAX: 82-2-32-861-3005
 http://www.samhoon.com E-mail:samhoon@samhoon.com

CLASS: S
 TITLE: CBRNe FOR ARMY MEDICAL BRIDGE
 모바일 오염제독실 시설

SCALE: 1/1
 DWG. NO.: 9-300-D-115-0503

REV: A1
 RESP. DWG. NO.:
 REV: 0

SUPPLIER DWG. NO.: SH02-WPG001-001
 SUPPLIER NAME: **SAMHOON**