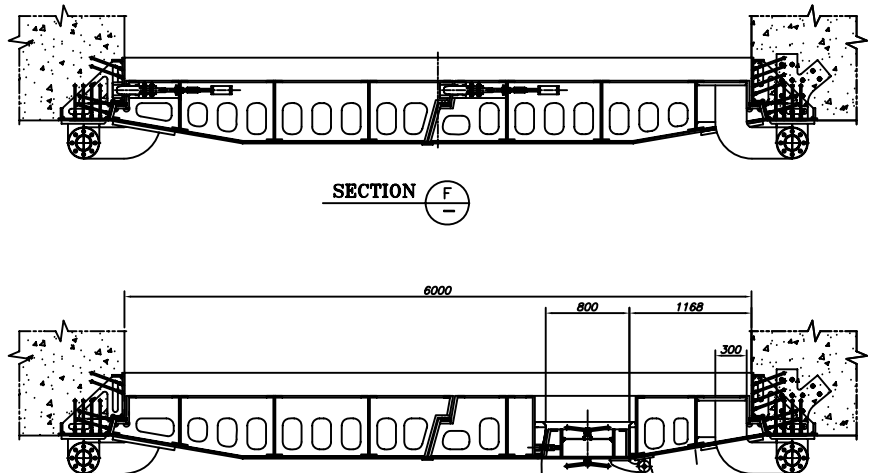
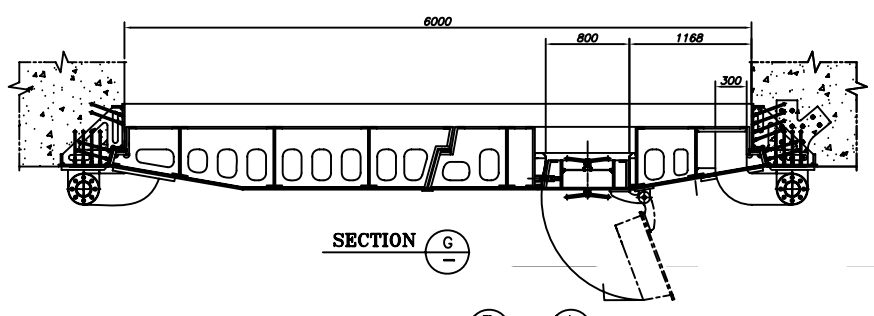


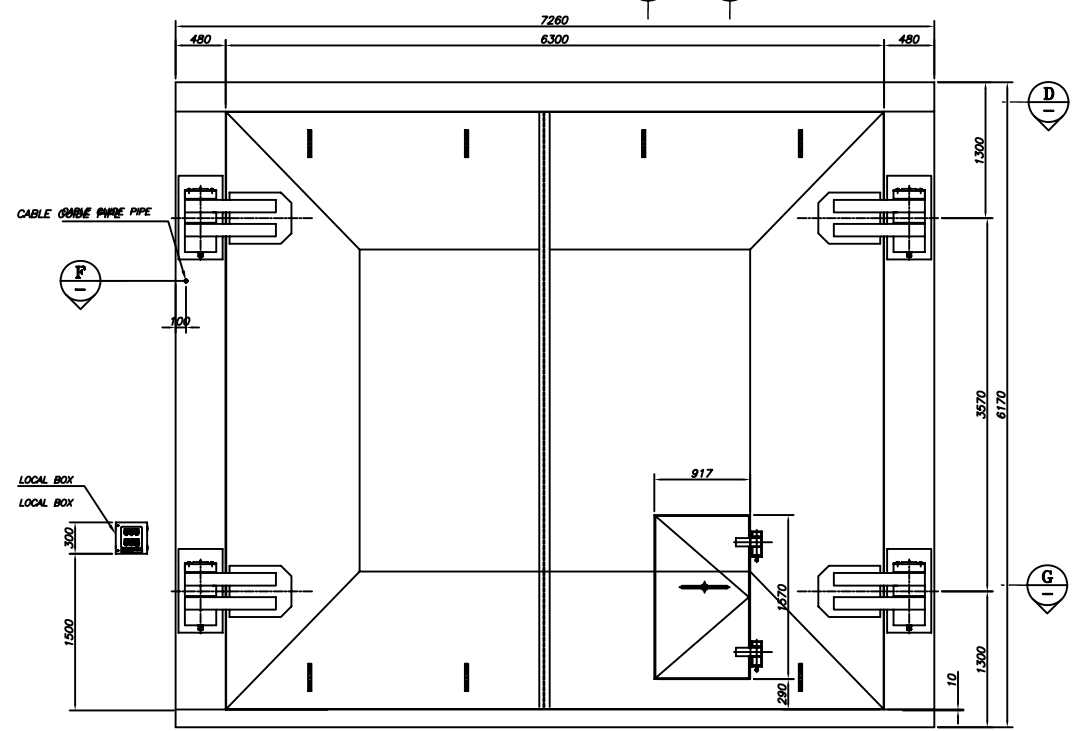
SECTION D



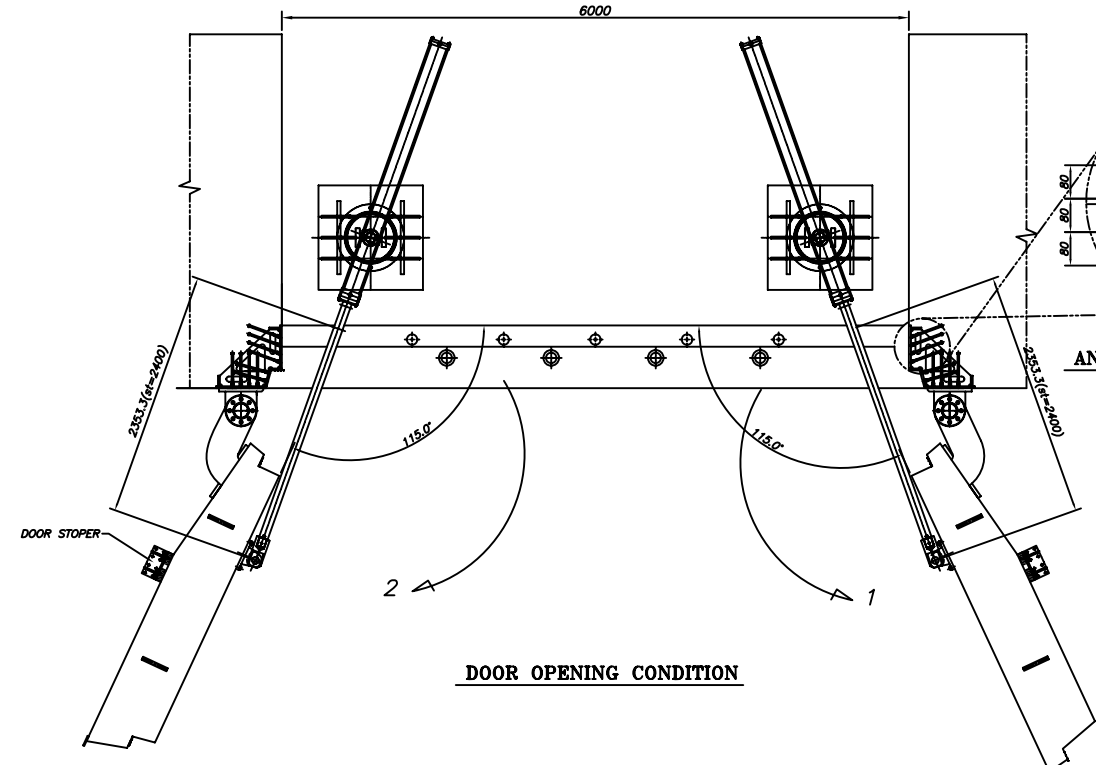
SECTION F



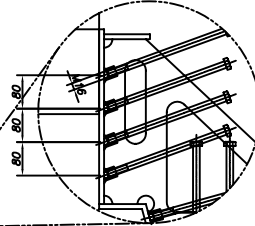
SECTION G



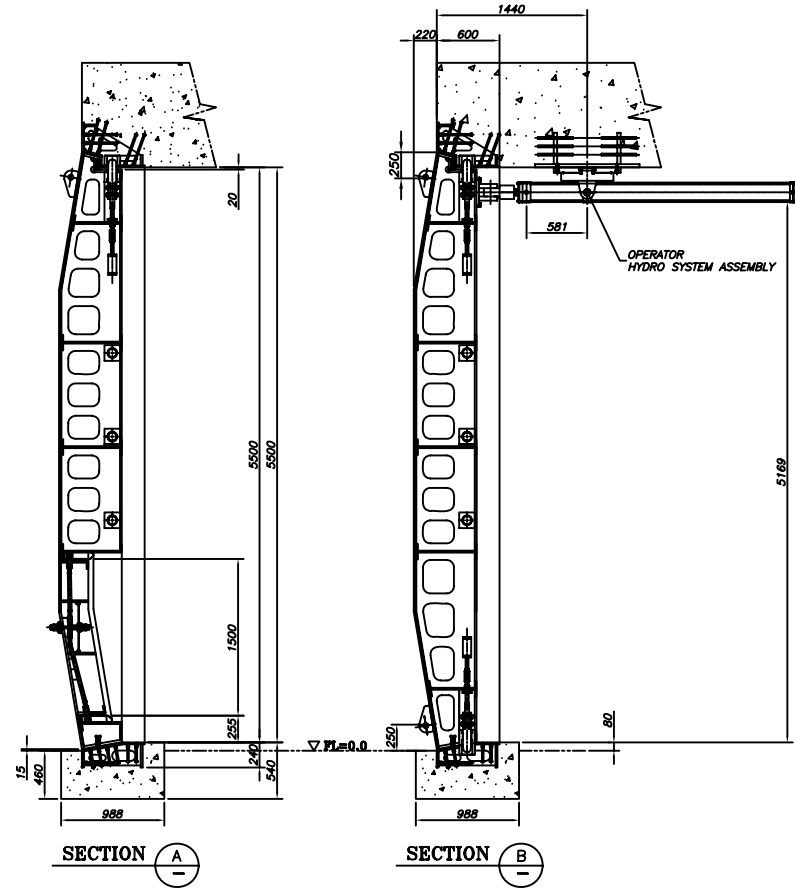
ELEVATION



DOOR OPENING CONDITION



ANCHOR BOLT DETAIL



SECTION A

SECTION B

18. PAINT SHALL BE AS FOLLOWS:
 SHOP PAINTING : PROVIDE BASE-COAT, FACTORY-APPLIED PAINTING OF FERROUS METAL ELEMENTS OF ASSEMBLES EXCLUDING OTHER SPECIFIED EXPOSED-FINISH SURFACES OF STAINLESS STEEL, ALUMINUM, BRONZE, AND SIMILAR METALS NOT INTENDED FOR PAINTING. PROVIDE TOUCH-UP PAINT WITH EACH PAINTED DOOR.
 (A) CLEAN STEEL AND ZINC-COATED STEEL SURFACES OF MILL SCALE, RUST, OIL, GREASE, DIRT, AND OTHER SUBSTANCES, IMMEDIATELY BEFORE FINISH APPLICATION.
 (B) APPLY PRETREATMENT OF COLD PHOSPHATE SOLUTION (SSPC-PT2), HOT PHOSPHATE SOLUTION (SSPC-PT4), OR BASIC ZINC-CHROMATE/VINYL-BUTYRAL SOLUTION (SSPC-PT3)
 (C) APPLY PAINT COAT SPECIFIED FOR SHOP APPLICATION, AND BAKE ON WITHIN TIME LIMITS RECOMMENDED BY MANUFACTURER OF PRETREATMENT. APPLY IN A UNIFORM, SMOOTH COAT TO RESULT IN DRY FILM THICKNESS OF NOT LESS THAN 0.05MM.
 (D) THICKNESS:
 PRIME : 1.0 ± .25 MIL
 FINISH : 2.0 ± .50 MIL
 (E) FINISH COLOR: RAL 7036 PLATINUM GREY

- NOTES-
- ALL DIMENSIONS ARE IN MILLIMETERS.
 - GENERAL ROLLED STRUCTURAL STEEL SHALL CONFORM TO THE REQUIREMENT OF ASTM A36 OR A992 OR EQUIVALENT STANDARD.
 - CARBON STEEL FOR MACHINERY AND STRUCTURAL STEEL SHALL CONFORM TO THE REQUIREMENT OF ASTM A283/A283M OR EQUIVALENT STANDARD.
 - STEEL STUDS FOR EMBEDDED FAMES SHALL CONFORM TO THE REQUIREMENT OF ASTM A108, ASTM A354 ASTM F1554 OR EQUIVALENT STANDARD.
 - STAINLESS STEEL SHEET SHALL CONFORM TO THE REQUIREMENT OF ASTM A666 OR JIS G4304.
 - GASKET FOR BLAST PROOF DOORS SHALL BE CONFORM TO THE REQUIREMENT OF ASTM D 2000 OR EQUIVALENT STANDARD.
 - THIS DOOR APPLIES FOR DOUBLE LEAF SWING DOORS. (CLEAR OPENING SIZE : 6.000mm WIDTH BY 5.500mm HIGH)
 - THIS DOOR IS DESIGNED REQUIREMENTS AS FOLLOWING:

DOOR NO.	POSITIVE PRESSURE (PSI)	NEGATIVE PRESSURE (PSI)	DURATION TIME	AIR LEAKAGE AT (3.0PSI)	REMARKS
180			N/A	0.1 SCFM	

- THIS DOOR IS ACTIVATED BY HYDRO-CYLINDER AND LOCKED BY 15 SHUTTING LOCK BOLTS.
- THIS DOOR IS ACTIVATED BY HYDRO-CYLINDER AND THE OPENING SPEED SHALL BE APPROXIMATELY 1.0M/MIN.
- ALL WELDING SHALL CONFORM TO APPLICABLE REQUIREMENT OF AWS D1.1.
- WELDING SHALL MEET THE REQUIREMENTS OF AWS D1.1-2000. THE FINAL WELDS SHALL BE VISUALLY INSPECTED TO THE REQUIREMENTS OF AWS D1.1. WELDING IN CONNECTION WITH THIS WORK REFERS TO ARE WELDING, CARBON DIOXIDE SEMIAUTOMATIC WELDING OR TIG WELDING. WORKERS SHALL BE QUALIFICATION EXAMINATION FOR WELDING AS REGARDS WORK PERFORMANCE ABILITY TO WELD A VARIETY OF PLATE THICKNESS.
 (A) ARC WELDING: QUALIFIED WELDERS WHO HAVE PASSED THE AWS D1.1 OR JIS Z3801 REQUIREMENTS.
 (B) CARBON DIOXIDE SEMIAUTOMATIC WELDING: QUALIFIED WELDERS WHO HAVE PASSED THE AWS D1.1 OR JIS Z3841 REQUIREMENTS.
 (C) TIG WELDING: QUALIFIED WELDERS WHO HAVE PASSED THE AWS D1.1 OR JIS Z3821 REQUIREMENT.
 WELDS WHOSE FAILURE COULD CAUSE A DROP OF THE LOAD SHALL BE POST-WELD HEAT TREATED IN ACCORDANCE WITH AWS D1.1 WHEN SUCH WELDS ARE SUSCEPTIBLE TO LAMELLAR HEATING.
 (D) THE EXEMPTION CONDITION OF POST-HEAT
 IN CASE OF INSTALLMENT OF MISSILE RESISTANT DOOR, THE EXEMPTION CONDITION OF POST-HEAT FOLLOWS THE FOLLOWING EXEMPTION CONDITIONS, BUT THE MATTERS OF PRE-HEAT SHOULD BE CONDUCTED WITH THE LIST BELOW.
- THE HEATING TREATMENT REQUISITES OF AWS D1.1-2000.
 (A) THE MATTERS ABOUT PRE-HEATING
 ACCORDING TO CLAUSE 3.5 OF AWS D1.1 (MINIMUM PREHEAT AND INTERPASS TEMPERATURE REQUIREMENTS, PRE-HEATING TEMPERATURE SHOULD KEEP 1071E.
 (B) THE MATTERS ABOUT POST-HEATING
 WHEREAS NOT SPECIALLY MENTIONED IN THE PRIME REQUIREMENTS OF THE CLIENTS, DECIDE AS AN EXEMPTED ONE ACCORDING TO ASME SECTION IX. GENERAL WELDING PROCESS DOCUMENTS, THE VERIFICATION OF WELDER, THE PROCESS DOCUMENTS OF INSPECTOR'S CONFIRMATION FOLLOWS THE PROCESS DOCUMENTS OF SAM HOON
- THIS DOOR IS IN MANUALLY OPERATING STRUCTURE FROM INSIDE IN CASE OF EMERGENT SITUATION.
- ALL BLAST DOORS SHALL BE DESIGNED AS TO FACILITATE EASY OPERATION UNDER NORMAL CONDITIONS. POWER ASSISTANCE DEVICE ARE REQUIRED FOR ALL DOORS TO OPEN AND CLOSE. PROVIDE LOCK CONTROL OPERATIONS OUTSIDE AND INSIDE. (ENTRY AND EXIT).
- DOOR INSIDE PART SHALL BE DESIGNED FOR MAINTANANCE.
- A HYDRAULIC OPERATOR ASSEMBLY FOR EACH LEAF SHALL BE FURNISHED TO OPEN AND CLOSE DOORS. THE OPERATOR WILL BE A COMPLETE AND FUNCTIONAL SYSTEM CONSISTING OF HYDRAULIC CYLINDER DEVICES, HIGH PRESSURE PUMP SYSTEM WITH INTERNAL FLUID RESERVOIR AND CONTROLS UNIT EQUIPPED WITH TIMER OVERRIDE. THE HYDRAULIC PUMP UNIT SHALL BE SUPPLIED WITH ADJUSTABLE VALVES TO CONTROL DOOR SPEED. PRESSURE UNIT SHALL CONSIST OF A 230V AC, 3-PHASE, SINGLE SPEED MOTOR OF SUFFICIENT HORSEPOWER WITH LOW VOLTAGE KEY PROTECTED POWER ON/OFF OPERATION CONTROLS AND ELECTRIC CONTROL PANEL. CONTROL OPERATIONS PANEL ARE 3-BUTTON PUSHBUTTON STATION INSTALLED ON EACH SIDE IN A TAMPER PROOF RATED ENCLOSURE.

0	22 FEB 2010	ISSUED FOR DRAWING	VISION ENG	JONG. SK	MOO. JS	APPROVED
REV.	DATE	DESCRIPTION	PREPARED	REVIEWED	APPROVED	APPROVED

SAMHOON CO., LTD.
 #507-1 Songnae2-Dong, Soos-Gu, Bucheon City, Gyeonggi-Do, Korea
 TEL: (82)-32-681-3501 / FAX: (82)-32-681-3505
 http://www.samhoon.com E-Mail:samhoon@chol.net

CLASS: 0
 TITLE: CUSTOM BLAST RATED DOOR(CBR) DOUBLE LEAF SWING WITH MAN DOOR ACCESS(6000x5500)(180PSI) ASSEMBLY

SCALE: 1/35
 SIZE: A1 (594X841)
 DWG. NO.:
 UNIT: 0
 REF. DWG. NO.:
 SUPPLIER DWG. NO.: SH10-CBR-B-FM-I7002

PNS: PROJECT B-FM PHASE ITEM NUMBER-7
 REV: 0
 SUPPLIER NAME: **SAMHOON**